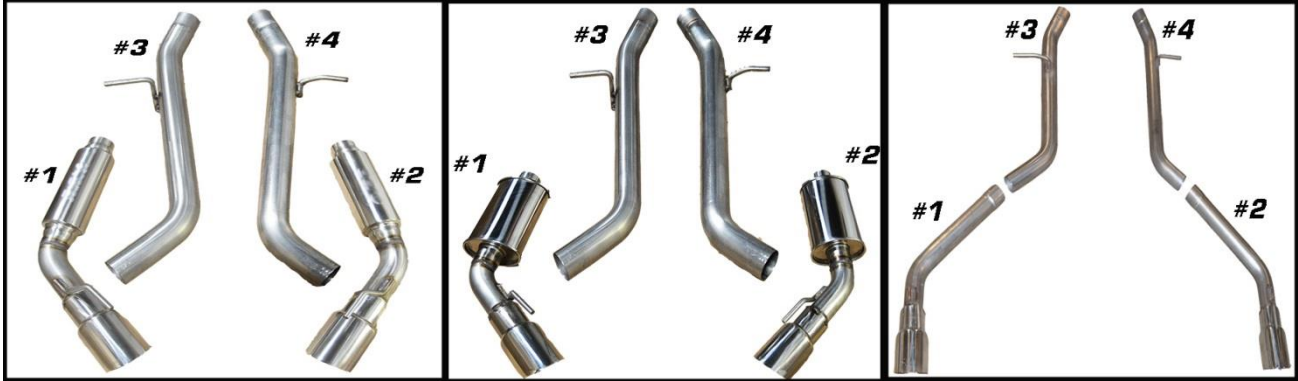


## 2016+ V6 Camaro Axle-Back Exhaust

Part No. 91U800; 91U801; 91U802



**STOP** – Verify that all of the following components are included in kit before beginning installation:

**Part #1** – Driver Side Axle-Back Assembly  
**Part #2** – Passenger Side Axle-Back Assembly

**Part #3** – Driver Side Under Axle Pipe  
**Part #4** – Passenger Side Under Axle Pipe

(2) – 2 ¼" Band Clamps

(2) – 2 ½" Band Clamps

### Required Tools

Measuring Tape  
Marker  
Sawzall or Cutting Tool  
Ratchet  
15mm Socket  
File or Abrasive Tool

### Torque Specifications

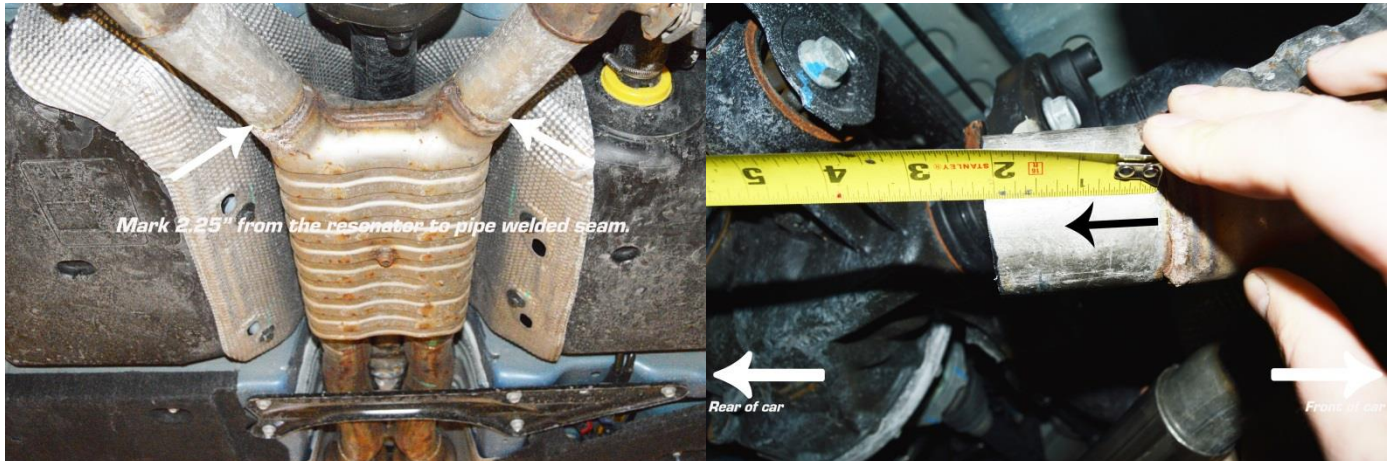
Band clamps - 30lb/ft-35lb/ft.

- Do not use impact on band clamps, overtightening can result in damaged clamp.

### Warranty Information

**IMPORTANT** – The warranty on this product is VOID if the product is not properly installed, or has been modified or altered in any way. If you believe that modification or alternate installation method will be required to fit an MRT Exhaust System on your vehicle, **please contact** MRT for assistance **BEFORE** making any modifications to the system.

**Begin with removing factory axle-back exhaust system:**



**Step #1:** Measure 2 ¼" from the seam where the outlet portion of the resonator and tube are welded.

**Step #2:** With an extra set of hands to support the factory muffler, remove the hanger rods from the rubber isolators. There are a total of six hanger rods to remove. One on each exhaust tip, two on the front portion of the muffler, and one on each pipe near the cut point. Once hangers are removed from rubber isolators remove the factory muffler assembly from the vehicle.

**Step #3:** Using a file or abrasive tool deburr the edge of both tubes where the cuts were made to remove the factory muffler.

## Installation steps for the MRT Axle-Back Exhaust System:

**Step #1:** Place one of the supplied 2 ¼" band clamps on each sections of factory tubing after the resonator.

**Step #2:** Install the driver side under axle pipe over the portion of the factory tubing after the resonator. Insert the hanger rod into the rubber isolator. Position the clamps at the connection points so they overlap approximately 1/8" past end of tubing to ensure proper seal when tightened. Snug clamps down to retain tubing position but do not tighten. Repeat this step with the passenger side under axle pipe.

**Step #3:** Place one of the supplied 2 ½" band clamps on each MRT under axle pipes.

**Step #4:** Insert the hanger rod into the rubber isolator then install the axle-back section over the under axle pipe outlet. Position the clamps at the connection points so they overlap approximately 1/8" past end of tubing to ensure proper seal when tightened. Repeat this step with the passenger side muffler assembly.

**Step #5:** Beginning with the front clamps, tighten to 30lb/ft-35lb/ft. With the front two clamps torqued move to the rear two clamps. Tighten both rear clamps to the same 30lb/ft-35lb/ft. Check exhaust tip alignment as clamps are being tightened.

**Step #9:** Check all connection points and start vehicle to check for leaks in a well ventilated area. If leaks are found review each step of the installation procedures and check for any missed steps in the process.

**Step #10:** If no leaks are found take vehicle for a drive and enjoy your new MRT exhaust system.



**NOTE:** Adjustment of tip can be made by sliding the under axle pipes or muffler assemblies in/out and rotating at each clamp joint.

During vehicle operation heat cycles tubing will expand and contract, because of this we suggest checking all clamps re-tighten if necessary after 30 miles of driving vehicle.

**MRT appreciates your business; please feel free to contact us at any point with questions or concerns at 734-455-5807 or via email at [Sales@MRT-Direct.com](mailto:Sales@MRT-Direct.com)**